

XE3-4TN Wi-Fi 6 Outdoor Access Point

802.11ax Tri-Radio 4x4/2x2 Access Point with N-type antenna connectors

QUICK LOOK:

- Tri-Radio/Tri-Band WiFi 6 and 6E
- Software-defined 5 GHz/6 GHz radio
- AFC compliant for 6 GHz operation*
- 6.6 Gbps aggregate data rate
- 2.5 GbE and 1 GbE uplink ports
- Manage by cnMaestro, XMS-Cloud, Swift



Outdoor high-density, future proof Wi-Fi

The XE3-4TN is an outdoor rated tri-radio Wi-Fi 6/6E 4x4/2x2 access point (AP) designed to deliver future-proof performance and value for building next generation networks. Wi-Fi 6 delivers faster and more efficient wireless network connections than previous generation Wi-Fi technologies. Wi-Fi 6E extends the capacity of Wi-Fi into the 6 GHz band, more than tripling the wireless spectrum available.

Software-defined radio provides flexibility

The software-defined radio (SDR) provides flexibility to match the capability of the connected clients and to match the regulatory limits in the 6 GHz band. Where 6 GHz outdoor is not allowed, operate the XE3-4TN in dual 5 GHz mode to expand capacity in the allowed 5 GHz channels. Where 6 GHz outdoor is allowed, and Wi-Fi clients support it, use tri-radio mode to dramatically increase density in a reduced RF interference environment.



XMS-Cloud



cnMaestro™ X

The XE3-4TN comes with industry leading three-year hardware warranty providing return and repair service on the access point and multiple tiers of customer support from the business day to extended hours and advanced replacement.

** Automatic frequency coordination (AFC) is under development and will be a cloud service that will assign operating channel and power. AFC is required for 6 GHz operation outdoors.*

XE3-4TN Wi-Fi 6 Outdoor Access Point

Access Point Specifications

Note: Some features will be included on subsequent firmware releases.

<p>FCC Ch 1–11, 36–64, 100–144, 149–165</p> <p>ISED Ch 1–11, 36–64, 100–116, 149–165</p> <p>ETSI Ch 1–13, 36–64, 100–140</p> <p>ROW (Individual country limits may apply) Ch 1–14, 36–64, 100–144, 149–177</p> <p>6 GHz Channels FCC/IC/ROW Ch 1–233 EU Ch 1–93</p> <p>Note: FCC, IC, EU DFS channels not supported in first release</p> <p>Radios</p> <ul style="list-style-type: none"> 5 GHz /6 GHz 802.11a/n/ac/ax, 4x4 SW configurable 5 GHz 802.11 a/n/ac Wave 2/ax, 2x2 2.4 GHz 802.11 b/g/n/ax, 2x2 BLE 4.1, GPS receiver <p>Wi-Fi 802.11 a/b/g/n/ac Wave 2/ax</p> <p>SSID Security WPA3, WPA2 (CCMP, AES, 802.11i), WPA2 Enterprise (802.1x/EAP), WPA PSK (TKIP), WEP, Open</p> <p>Max PHY Rate</p> <ul style="list-style-type: none"> 5/6 GHz radio 4,804 Mbps 5 GHz radio 1,201 Mbps 2.4 GHz radio 573.5Mbps <p>Ports</p> <ul style="list-style-type: none"> 1 x IEEE 100/1000/2500 Mbps Ethernet 1 x IEEE 10/100/1000 Mbps Ethernet with PoE out <p>Max EIRP</p> <ul style="list-style-type: none"> 5/6 GHz 36 dBm/TBD 5 GHz 36 dBm 2.4 GHz 36 dBm <p><i>EIRP may be limited by country regulations</i></p>	<p>Power Typical power 25W (802.3at) Maximum power 62W with PoE out enabled and sourcing 30W</p> <p>Dimensions 220mm x 200mm x 86mm (8.66 in x 7.87 in x 3.39 in)</p> <p>Weight 2,920 g (6.44 lbs)</p> <p>Security Kensington lock slot</p> <p>LEDs Multi-color status LEDs</p> <p>Ambient Operation Temperature -40°C to 65°C (-40°F to 149°F)</p> <p>Storage Temperature -40°C to 70°C (-40°F to 158°F)</p> <p>Humidity 95% RH non-condensing</p> <p>Certifications (Compliance) WiFi Alliance 80211a/b/g/n/ac/ax, PP2.0 FCC, ETSI, CE, IC, IEC60950, IEC62368, EN61373, EN50121, EN 303 413 (GPS), IEC 60068-2-5 (solar radiation), IEC 60529 (Ingress Protection)</p>
---	--

XE3-4TN Wi-Fi 6 Outdoor Access Point

Network Specifications

Note: Some features will be included on subsequent firmware releases.

Operational Modes	Standalone Cloud managed cnMaestro or VM Cloud managed XMS
--------------------------	--

WLAN	1500 clients, 16 SSIDs WPA-TKIP, WPA2 AES, 802.1x 802.11w PMF
-------------	---

Authentication Encryption	Hotspot 2.0, 802.1x EAP-SIM/AKA, EAP-PEAP, EAP-TTLS, EAP-TLS, MAC authentication local database or RADIUS
----------------------------------	---

Scheduled WLAN	On/off by day, week, time of day
-----------------------	----------------------------------

Guest Access	EasyPass guest self-registration, guest Ambassador, ePSK, Vouchers, Rate Limit, Splash page hosted on AP or cnMaestro Client isolation per SSID, per network
---------------------	---

Data Limit	Client rate limit per SSID
-------------------	----------------------------

Subscriber QoS	WMM
-----------------------	-----

Fast Roaming	802.11r, OKC, Enhanced roaming
---------------------	--------------------------------

Mesh	Multi-hop, either band
-------------	------------------------

Channel Selection	Multi-modal channel selection with AutoChannel, AutoBand (XMS) and autotune (cnMaestro)
--------------------------	---

RF Management	Multi-Modal RF optimization supporting AutoCell (XMS) and AutoRF (cnMaestro) performed in the intelligent edge AP. Out of band RF spectrum analysis, radio self test network assurance (XMS), RF monitor with chn/noise/interference
----------------------	--

Network	TCP connection log, NAT logging firewall, DHCP server, L2, L3 or DNS based access control, VLAN Pooling, RADIUS attribute VID, VLAN per SSID per user
----------------	---

Band Steer Load Balance	Yes
--------------------------------	-----

Tunnel	L2TP, L2oGRE, PPPoE
---------------	---------------------

Network and RF Management Tools	Wired and wireless remote packet capture, auto logging, ZapD performance tool, rogue AP detection
--	---

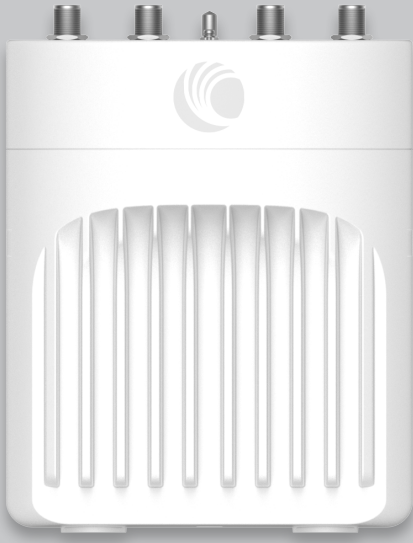
Services	WIDs/WIPs, NTP, Syslog, SNMP traps, DNS proxy, auto-off on WAN failure, Layer 2 – layer 7 application visibility & control,
-----------------	---

API	RESTful management and statistics API Presence location APIs
------------	---

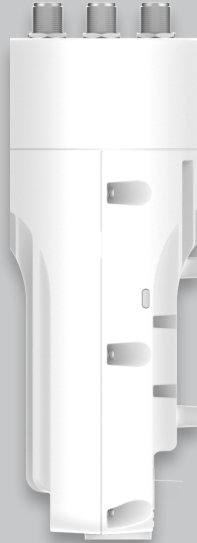
Standards

Wi-Fi Protocols	802.11a/b/g/n/ac wave 2, 802.11ax, up to 4x4. 20/40/80/160 MHz, MU-OFDMA, MU-MIMO, TWT, MIMO, VHT MCS rates, 16/64/256/1024/4096-QAM, HT20/40/80/160 MHz
	Transmit Beam steering, Airtime Fairness, AMSDU, AMPDU, RIFS, STBC, LDPC, MIMO Power Save, MRC, BPSK, QPSK, CCK, DSSS, OFDM
	IEEE 802.11d/e/h/i/k/r/u/v/w

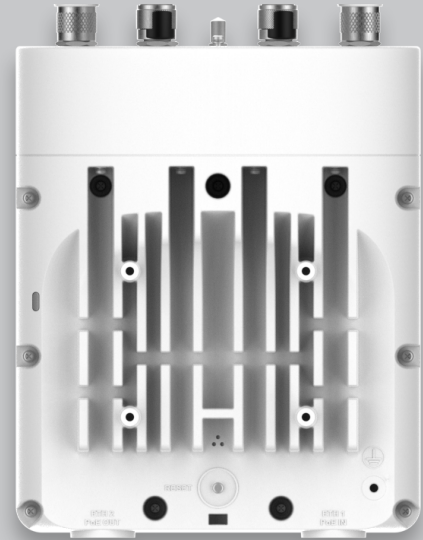
XE3-4TN Wi-Fi 6 Outdoor Access Point



Front



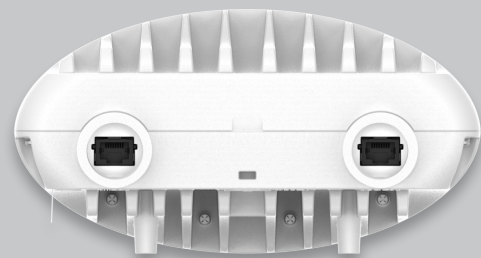
Side View



Back Panel



Top



Bottom

XE3-4TN Wi-Fi 6 Outdoor Access Point

XE3-4TN Radio Ordering Information

XE3-4T	Regulatory Model
XE3-4TN0A00-US	XE3-4TN Outdoor Wi-Fi 6E 4x4 SDR Access Point, 2.5 GbE, US
XE3-4TN0A00-EU	XE3-4TN Outdoor Wi-Fi 6E 4x4 SDR Access Point, 2.5 GbE, EU
XE3-4TN0A00-RW	XE3-4TN Outdoor Wi-Fi 6E 4x4 SDR Access Point, 2.5 GbE, 6 GHz radio disabled, RW
XE3-4TN0A06-RW	XE3-4TN Outdoor Wi-Fi 6E 4x4 SDR Access Point, 2.5 GbE, 6 GHz radio enabled, RW
XE3-4TN0A00-CA	XE3-4TN Outdoor Wi-Fi 6E 4x4 SDR Access Point, 2.5 GbE, CA
N000000L142A	N000000L142A PoE injector, 60W, 5 GbE, Indoor, Energy Level 6 Supply

Antenna Ordering Guide

	2.4 GHz 2x2	5 GHz 2x2	2.4/5 GHz 2x2	5 GHz 4x4	6 GHz 4x4
Antenna ports 2.4 GHz/5 GHz	ANT-D15-2X2-2G ANT-D90-2X2-01 ANT-OM-1X1-05	ANT-D15-2X2-5G ANT-D90-2X2-01 ANT-OM-1X1-05	ANT-OM-1X1-05 ANT-D90-2X2-01	N/A	N/A
Antenna ports 5 GHz/6 GHz	N/A	N/A	N/A	ANT-D35-4X4-01 ANT-OM-1X1-05 ANT-D60-4X4-01	ANT-D35-4X4-01 ANT-OM-1X1-05 ANT-D60-4X4-01

Antenna Ordering Information

ANT-OM-1X1-05	Tri-Band 2.4 GHz/5 GHz/6 GHz, 5 dBi, omni-directional 1x1 antenna with N-male connector
ANT-D35-4X4-01	Dual band 5 GHz/6 GHz, 13 dBi, 35° beamwidth 4x4 antenna with N-female connectors, bracket included, cables sold separately
ANT-D15-2X2-2G	2.4 GHz, 18 dBi, 15°, 2x2 panel antenna with N-female connectors, cables sold separately
ANT-D15-2X2-5G	5 GHz, 18 dBi, 15°, 2x2 panel antenna with N-female connector for XH2-120. Cables sold separately
ANT-D90-2X2-01	2.4 GHz/5 GHz, 6/7 dBi 90° 2x2 panel antenna N-female connectors. Cables sold separately
ANT-GPS-01	GPS antenna
ANT-CB-10MM-03	Antenna cable N-type M to M, LMR400, 3m, qty 1 cable
ANT-CB-10MM-04	Antenna cable N-type M straight to N-type M Right Angle-LMR400, 3m, Qty 1 cable

XE3-4TN Wi-Fi 6 Outdoor Access Point

cnMaestro X Ordering Information

MSX-SUB-XE3-4TN-1	cnMaestro X for one XE3-4TN AP. Creates one Device Tier 3 slot. Includes Cambium Care Pro support. 1-year subscription
MSX-SUB-XE3-4TN-3	cnMaestro X for one XE3-4TN AP. Creates one Device Tier 3 slot. Includes Cambium Care Pro support. 3-year subscription
MSX-SUB-XE3-4TN-5	cnMaestro X for one XE3-4TN AP. Creates one Device Tier 3 slot. Includes Cambium Care Pro support. 5-year subscription

XMS and EasyPass Ordering Information

XMSC-SUB-2R-1	XMS-Cloud 1-year subscription: 2 or 3-radio APs with EasyPass Guest Self-Registration and Guest Ambassador modules and Cambium Care Advanced Support
XMSC-SUB-2R-3	XMS-Cloud 3-year subscription: 2 or 3-radio APs with EasyPass Guest Self-Registration and Guest Ambassador modules and Cambium Care Advanced Support
XMSC-SUB-2R-5	XMS-Cloud 5-year subscription: 2 or 3-radio APs with EasyPass Guest Self-Registration and Guest Ambassador modules and Cambium Care Advanced Support
XMSC-EDU-SUB-2R-1	XMS-Cloud 1-year subscription for Education: 2 or 3-radio APs with EasyPass Guest Self-Registration and Guest Ambassador modules and Cambium Care Advanced Support
XMSC-EDU-SUB-2R-3	XMS-Cloud 3-year subscription for Education: 2 or 3-radio APs with EasyPass Guest Self-Registration and Guest Ambassador modules and Cambium Care Advanced Support
XMSC-EDU-SUB-2R-5	XMS-Cloud 5-year subscription for Education: 2 or 3-radio APs with EasyPass Guest Self-Registration and Guest Ambassador modules and Cambium Care Advanced Support
XMSC-MSP-SUB-2R-1	XMS-Cloud 1-year subscription for MSP: 2 or 3-radio AP with EasyPass Guest Self-Registration and Guest Ambassador modules and Cambium Care Advanced Support
XMSC-MSP-SUB-2R-3	XMS-Cloud 1-year subscription for MSP: 2 or 3-radio AP with EasyPass Guest Self-Registration and Guest Ambassador modules and Cambium Care Advanced Support
XMSC-MSP-SUB-2R-5	XMS-Cloud 1-year subscription for MSP: 2 or 3-radio AP with EasyPass Guest Self-Registration and Guest Ambassador modules and Cambium Care Advanced Support
EASY-SUB-2R-1	EasyPass 1-year subscription for a 2 or 3-radio APs operating with XMS-Cloud or XMS-Enterprise
EASY-SUB-2R-3	EasyPass 3-year subscription for a 2 or 3-radio APs operating with XMS-Cloud or XMS-Enterprise
EASY-SUB-2R-5	EasyPass 5-year subscription for a 2 or 3-radio APs operating with XMS-Cloud or XMS-Enterprise

XE3-4TN Wi-Fi 6 Outdoor Access Point

Cambium Care Ordering Information

CCADV-SUP-XE3-4TN-1 Cambium Care Advanced, 1-year support for one XE3-4TN Wi-Fi 6/6E AP. 24x7 TAC support, SW updates, and NBD advance replacement for HW

CCADV-SUP-XE3-4TN-3 Cambium Care Advanced, 1-year support for one XE3-4TN Wi-Fi 6/6E AP. 24x7 TAC support, SW updates, and NBD advance replacement for HW

CCADV-SUP-XE3-4TN-5 Cambium Care Advanced, 3-year support for one XE3-4TN Wi-Fi 6/6E AP. 24x7 TAC support, SW updates, and NBD advance replacement for HW

CCPRO-SUP-XE3-4TN-1 Cambium Care Pro, 1-year support for one XE3-4TN Wi-Fi 6/6E AP. 24x7 TAC support and SW updates

CCPRO-SUP-XE3-4TN-3 Cambium Care Pro, 3-year support for one XE3-4TN Wi-Fi 6/6E AP. 24x7 TAC support and SW updates

CCPRO-SUP-XE3-4TN-5 Cambium Care Pro, 5-year support for one XE3-4TN Wi-Fi 6/6E AP. 24x7 TAC support and SW updates

CCADV-UPG-XE3-4TN-1 Cambium Care Advanced Add-on to cnMaestro X, 1-year support for one XE3-4TN. 24x7 TAC support, SW updates, and NBDS advance replacement for HW

CCADV-UPG-XE3-4TN-3 Cambium Care Advanced Add-on to cnMaestro X, 3-year support for one XE3-4TN. 24x7 TAC support, SW updates, and NBDS advance replacement for HW

CCADV-UPG-XE3-4TN-5 Cambium Care Advanced Add-on to cnMaestro X, 5-year support for one XE3-4TN. 24x7 TAC support, SW updates, and NBDS advance replacement for HW

LIMITED WARRANTY

Cambium Networks XE3-4TN Wi-Fi 6 Access Point
includes a 3-year hardware warranty.

About Cambium Networks

Cambium Networks empowers millions of people with wireless connectivity worldwide. Its wireless portfolio is used by commercial and government network operators as well as broadband service providers to connect people, places and things. With a single network architecture spanning fixed wireless and Wi-Fi, Cambium Networks enables operators to achieve maximum performance with minimal spectrum. End-to-end cloud management transforms networks into dynamic environments that evolve to meet changing needs with minimal physical human intervention. Cambium Networks empowers a growing ecosystem of partners who design and deliver gigabit wireless solutions that just work.

[cambiumnetworks.com](https://www.cambiumnetworks.com)

02102023